

ACE

AERIAL WORK PLATFORMS

TELESCOPIC / ARTICULATED BOOM LIFTS

Rough terrain and rugged,
Aerial Access Platforms

ACE INDIA'S NO. 1
CRANE BRAND



- Heavy duty & robust construction
- Better stability
- Best in class component life
- Easily Elevates in tight spaces
- User friendly controls
- Indigenously built



ACE

AERIAL WORK PLATFORMS

TELESCOPIC / ARTICULATED BOOM LIFTS

Rough terrain and rugged,
Aerial Access Platforms

ACE INDIA'S NO. 1
CRANE BRAND

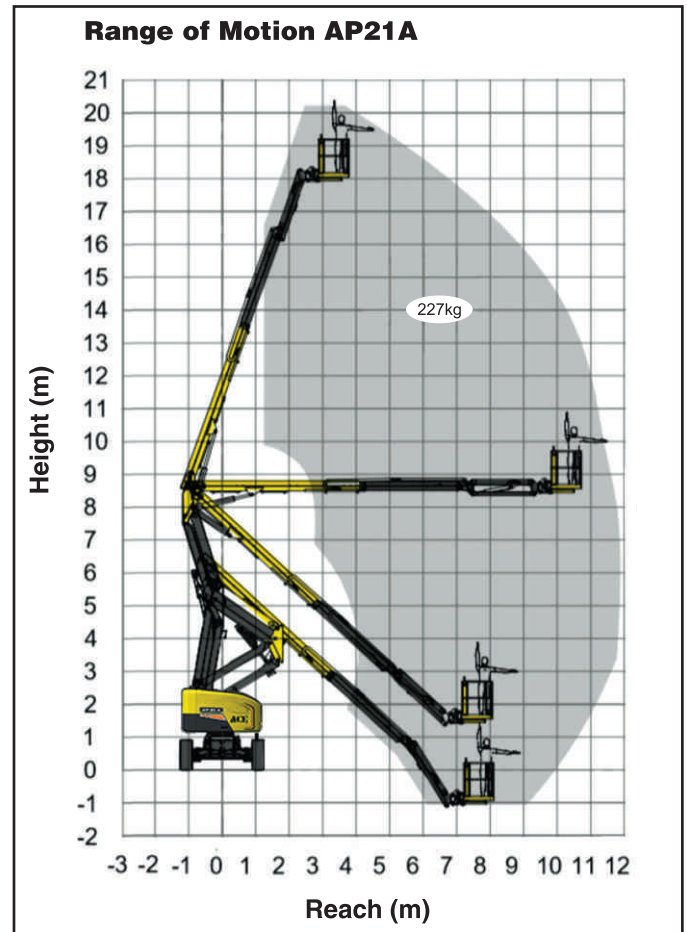


- Heavy duty & robust construction
- Better stability
- Best in class component life
- Easily Elevates in tight spaces
- User friendly controls
- Indigenously built



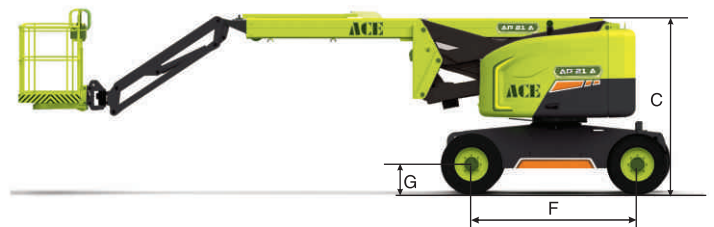
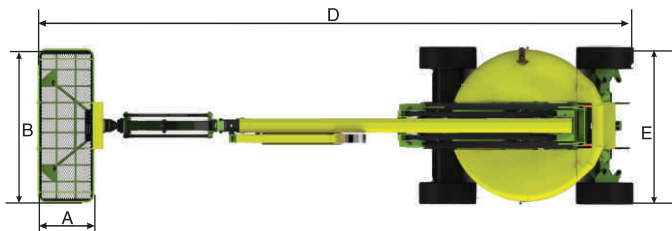
Specifications	Articulated Boom Lift	Telescopic Boom Lift	
Model	AP21A	AP22S	AP27S
Reach Specification			
Working height maximum	20.08 m / 65 ft. 11 in	22.02 m / 72 ft. 24 in	26.90 m / 88 ft. 3 in
Platform height maximum	18.08 m / 59 ft. 4 in	20.02 m / 65 ft. 6 in	24.90 m / 81 ft. 8 in
Horizontal reach maximum	11.6 m / 38 ft.	17.67 m / 57 ft. 9 in	22.85 m / 75 ft.
Up and over height	8.3 m / 27 ft. 3 in	–	–
Dimensional Data			
Platform length 'A'	0.81 m / 2 ft 8 in	0.84 m / 2 ft. 7 in	0.81 m / 2 ft 8 in
Platform width 'B'	1.83 m / 6 ft.	2.43 m / 7 ft. 9 in	1.83 m / 6 ft.
Height stowed 'C'	2.56 m / 8 ft. 5 in	2.84 m / 9 ft. 4 in	2.85 m / 9 ft. 4 in
Length - stowed 'D'	9 m / 29 ft. 6 in	10 m / 33 ft.	12.3 m / 40 ft. 4 in
Width 'E'	2.47 m / 8 ft. 1 in	2.49 m / 8 ft. 16 in	2.56 m / 8 ft. 5 in
Wheelbase 'F'	2.49 m / 8 ft. 2 in	2.49 m / 8 ft. 16 in	2.85 m / 9 ft. 4 in
Ground clearance - center 'G'	0.31 m / 1 ft.	0.38 m / 1 ft. 2 in	0.41 m / 1 ft. 4 in
Productivity			
Lift capacity	227 Kgs	250 Kgs	227 Kgs
Platform rotation	180°		
Vertical jib rotation	133°		
Turntable rotation	360° Continuous		
Drive speed - stowed	6 Kmph		
Drive speed - raised	1.6 Kmph	1.2 Kmph	
Gradability	30%	40%	30%
Turning radius - inside	3.2 m / 10 ft. 6 in	2.1 m / 6 ft. 8 in	3.3 m / 10 ft. 10 in
Turning radius - outside	6.3 m / 20 ft. 8 in	5.32 m / 17 ft. 5 in	6.5 m / 21 ft. 4 in
Controls	12 V DC (Proportional)	12 V DC (Proportional)	
Tyres	36x14-20 (Solid)	385 / 70-20 (Solid)	
Power			
Power source	4 Cylinder, Water Cooled		
	Diesel Engine 35.4 kw (47.5 hp)	Diesel Engine 56.6 kw (76 hp)	Diesel Engine 35.4 kw (47.5 hp)
Auxiliary power unit	12V DC	12V DC	12V DC
Hydraulic tank capacity	143 L	150 L	150 L
Fuel tank capacity	127 L	148 L	148 L
Weight	11200 Kgs	13512 kgs	18060 kgs
Standard Compliance	EN Safety		

Articulated Boom Lift AP21A



Note:-

- For working height adds 2mtrs to Platform height
- All dimensions and weights are within $\pm 5\%$



Working
Height



Jib

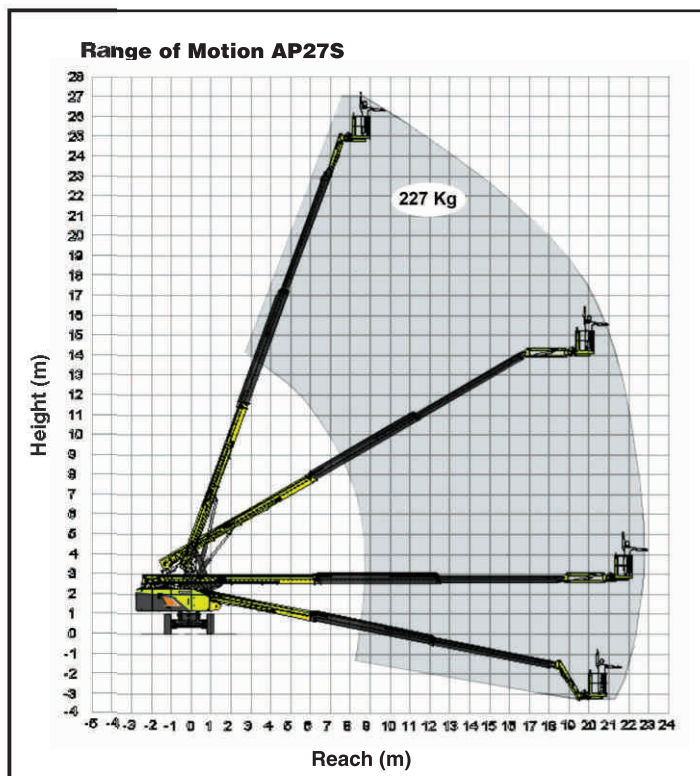


Diesel Engine



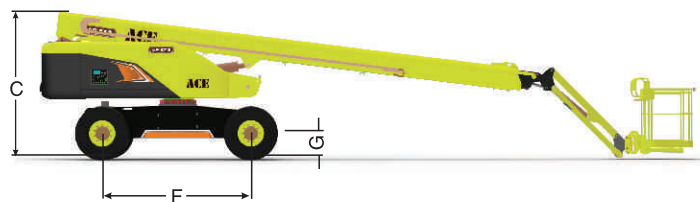
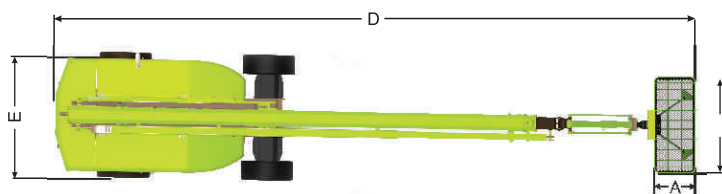
Rough Terrain-RT

Telescopic Boom Lift AP27S



Note:-

- For working height adds 2mtrs to Platform height
- All dimensions and weights are within $\pm 5\%$



Standard Features :

- Emergency Stop Button
- Over Tilt Protection System
- On Board Diagnostic System
- Full Height Entry Gate
- Self Levelling Platform
- Proportional Control
- Secondary Guarding
- LED Display
- Load Sensing System
- Emergency Lowering System
- 360° Continuous Turntable Rotation
- Low Fuel Level Indicator
- Hydraulic Oil Cooler



AWP Ranges



**Telescopic Boom
Lift - Diesel**



**Articulated Boom
Lift - Diesel**



**Scissor
Lift - Electric**



Man Lift Crane



**Mast Boom
Lift - Electric**



**Truck Mounted
Boom Lift**



Single Mast Lift



Twin Mast Lift



Multi Mast Lift



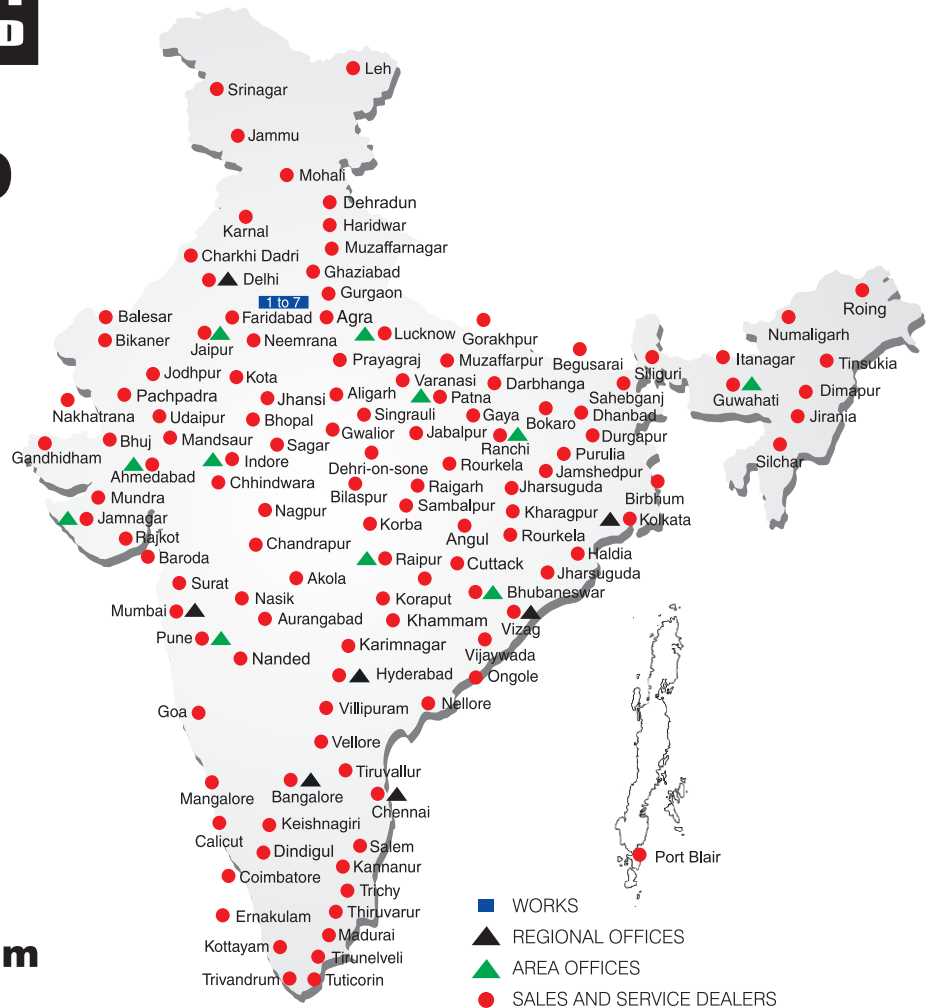
**Scissor
Lift - Manual**

BUILT TO PERFORM



**RELIABLE AND
DEPENDABLE
EFFICIENCY**

NETWORK



www.ace-cranes.com

MARKETING H.Q.

4th Floor, Pinnacle
Surajkund, NCR-121009
Ph.: +91-129-4550000
Fax: +91-129-4550022
E-mail: marketing@ace-cranes.com

REGISTERED OFFICE

Dudhola Link Road, Dudhola
Palwal-121102, Haryana
Ph.: +91-1275-280111
Fax: +91-1275-280133
CIN: L74899HR1995PLC053860

MUMBAI OFFICE

31, "Kalpataru Court"
Chembur, Mumbai - 400074
Ph.: +91-22-25206846, 25207070
Fax: +91-22-25207071
E-mail: acemumbai@ace-cranes.com

KOLKATA OFFICE

84A, AJC Bose Road, Fomra Tower -
2nd Floor, Kolkata-700014
Ph.: +91-9038070630
E-mail: acekolkata@ace-cranes.com

CHENNAI OFFICE

1st Floor, "Alsa Regency", 165
Eldams Road, Alwar Pet
Chennai - 600018
Ph.: +91-44-24314253
Fax: +91-44-24314252
E-mail: acechennai@ace-cranes.com

HERE TO SERVE YOU.

SPARE PARTS & SERVICE

ACE has all India Sales and Service network operating out of all the major cities. These outlets are fully equipped to provide genuine spare parts and services by company trained engineers. These outlets are further supported by company officials based at Delhi, Mumbai, Chennai, Kolkata, Ahmedabad, Surat, Pune, Jaipur, Chandigarh, Ranchi, Raipur, Indore, Bhubaneswar, Lucknow, Jamnagar, Hyderabad, Bangalore, Guwahati, Patna, Vizag & Kochi.



Action Construction Equipment Ltd.

Follow us on



ACE reserves the right to alter any specifications without prior notice. Dimensions, weights & capacities mentioned herein are variable by $\pm 5\%$. Accessories if shown are not part of the Standard Equipment.